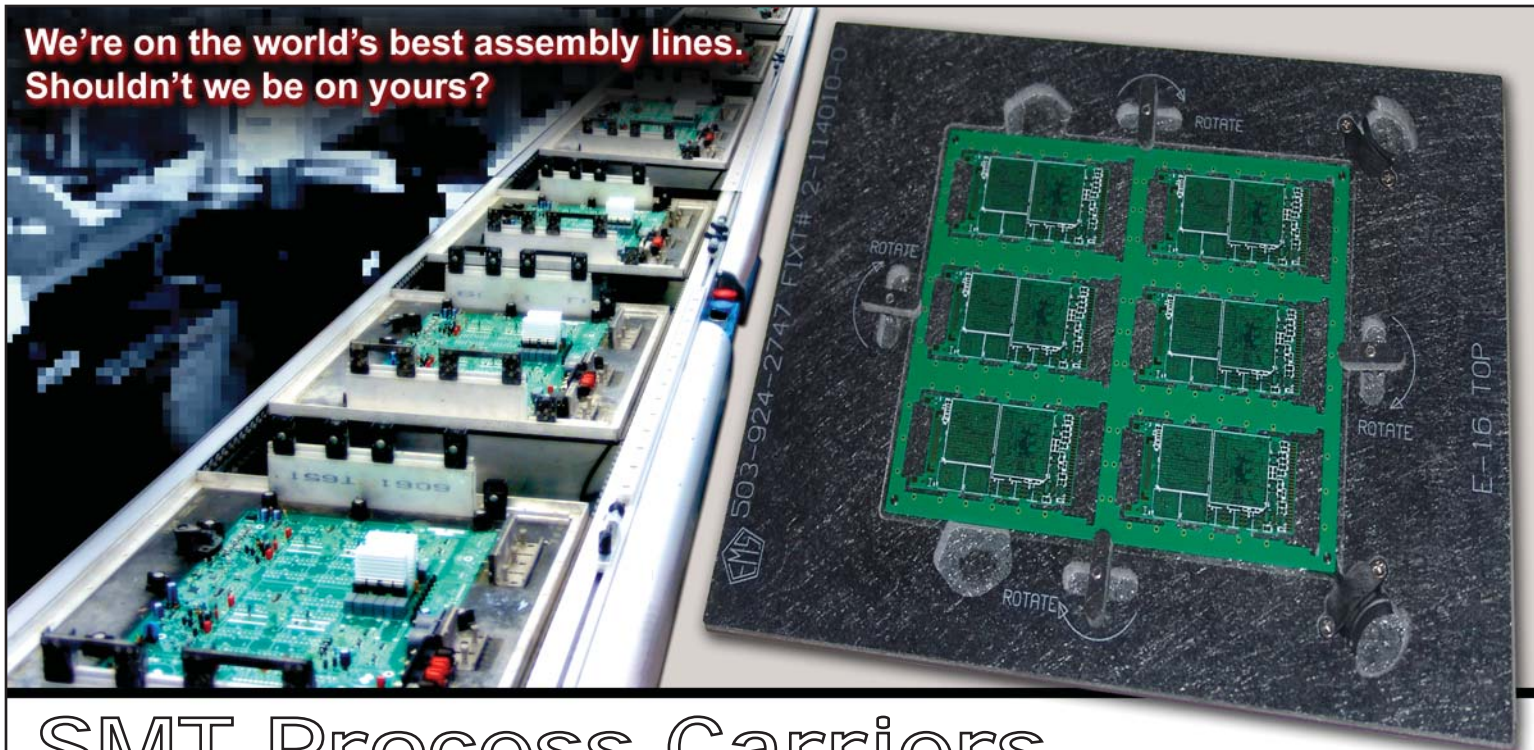


**We're on the world's best assembly lines.
Shouldn't we be on yours?**

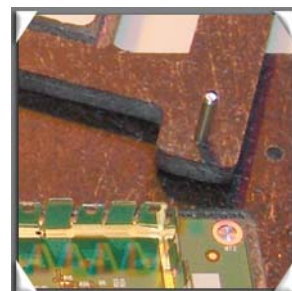
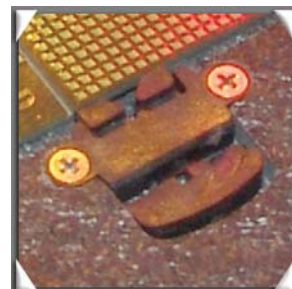
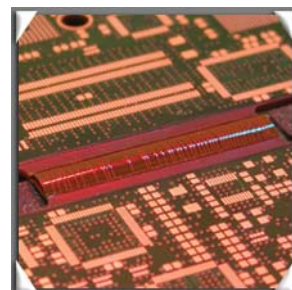


SMT Process Carriers

Increase accuracy and repeatability in your surface mount operations. SMT Process Carriers are **necessary for processing** any type of **flex or rigid-flex** circuitry and also makes it **possible to process odd shaped PCB's** or circuit boards that have **components placed close to the board edge**.

SMT Process Carriers from Pentagon EMS are designed to support the PCB without interference through each step of the surface mount process. Our flush mounted PCB holddowns **will not interfere with any printing or placement operations**. Our SMT fixtures are also designed to reduce the maximum amount of thermal mass possible so they will be as transparent to the process as possible.

- Required for rigid-flex and flex circuit processing
- Process odd-shaped PCB's
- Process PCB's with components close to the edge of the board
- Flush-mounted PCB holddowns
- Designed to support the board through printing, placement and reflow
- Options available for securing topside or bottomside components through reflow
- Usability Guarantee
- Rewards Program



PCB Assembly Process Tooling
pentagon 
ELECTRONIC MANUFACTURING SOLUTIONS

10950 SW 5th St. Suite 275 - Beaverton, OR 97005 - (503) 924-2747 - www.pentagon-ems.com