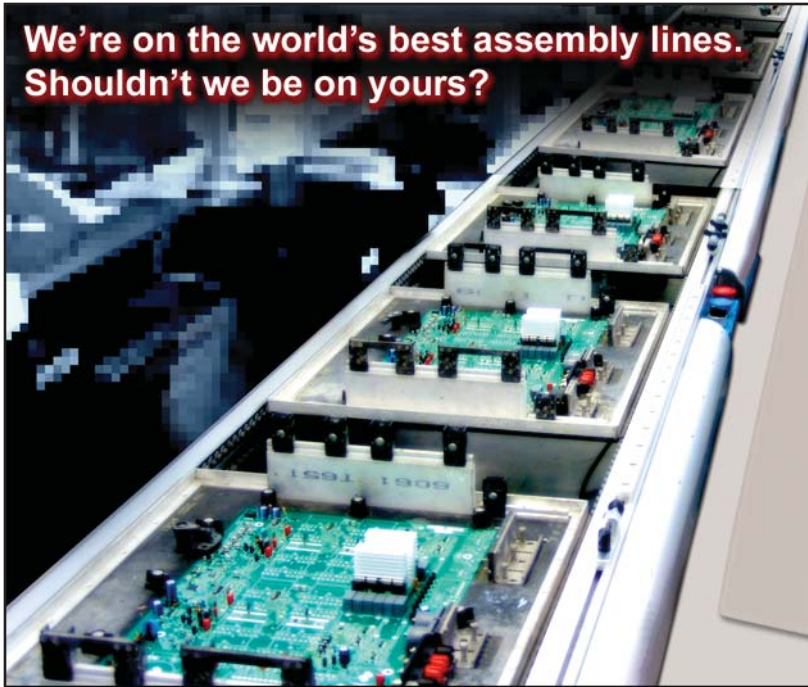


**We're on the world's best assembly lines.
Shouldn't we be on yours?**

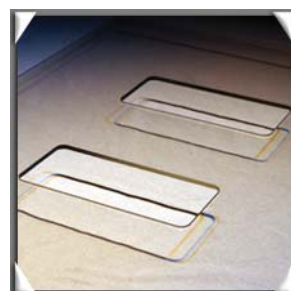
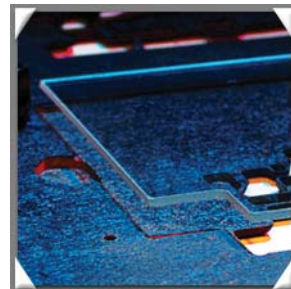


Wave Glass

See how your fixture is going to perform and make all the necessary setup adjustments to your wave solder operation before loading a single board! You don't need to fly blind.

Pentagon EMS Wave Glass is cut to the exact shape of the perimeter of the circuit board, and fits into the PCB pocket of the fixture. This allows you to see exactly how the solder is flowing in each exposed area of the fixture and adjust your settings according to what you see. Wave Glass is an invaluable tool to aid in reducing the risk of insufficient solder and board flooding.

- Provides a visible means to see how solder flows in each exposed area of the fixture and make adjustments
- Cut to the perimeter shape of the PCB
- Can be cut to allow for internal fixture features also
- Aids in reducing the risk of insufficient solder and board flooding
- 1/8" thick, withstands high temperatures required in the wave solder process
- Usability Guarantee
- Rewards Program



PCB Assembly Process Tooling
pentagon 
ELECTRONIC MANUFACTURING SOLUTIONS

10950 SW 5th St. Suite 275 - Beaverton, OR 97005 - (503) 924-2747 - www.pentagon-ems.com