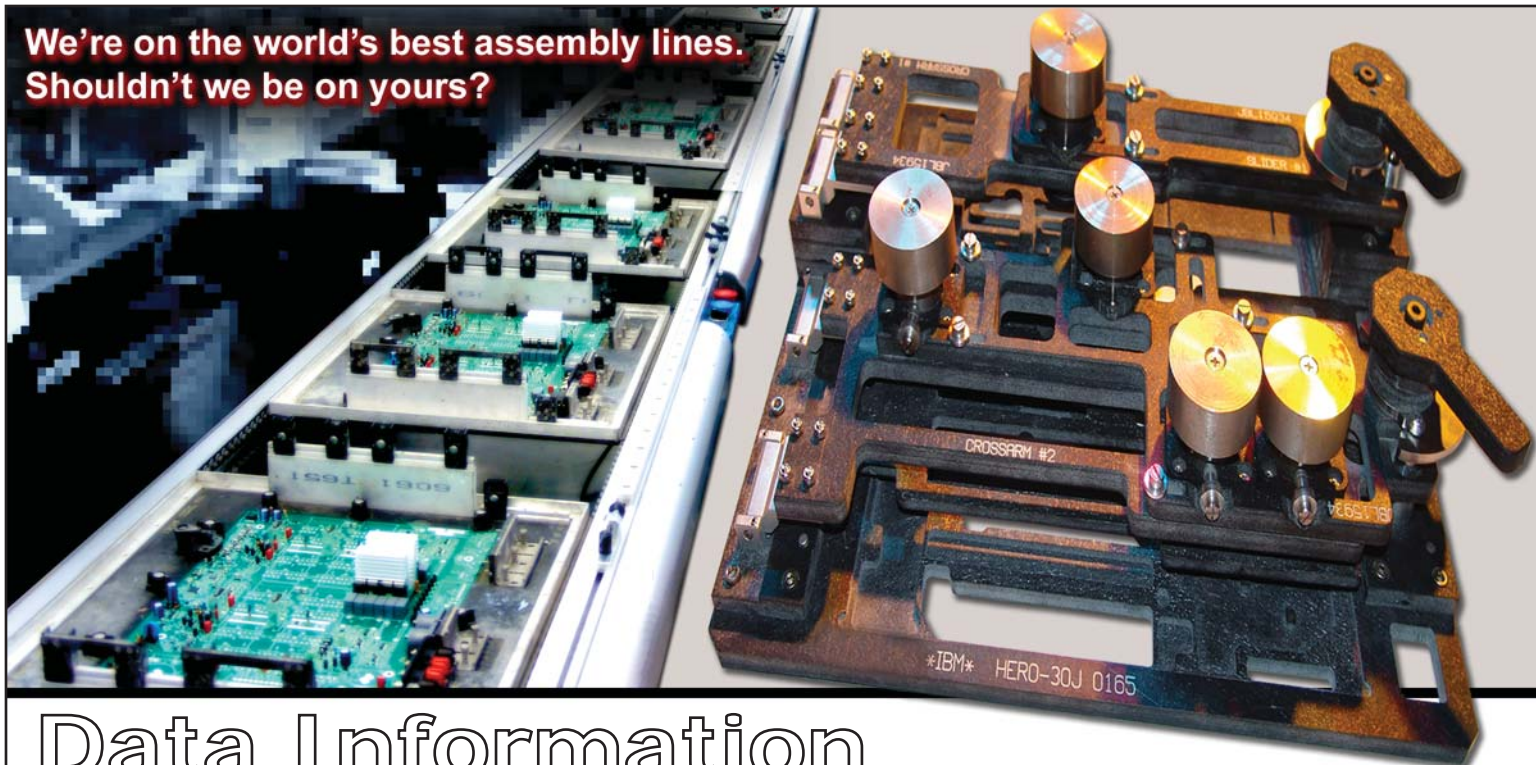


**We're on the world's best assembly lines.
Shouldn't we be on yours?**



Data Information

Pentagon EMS is capable of interpreting the following data formats:

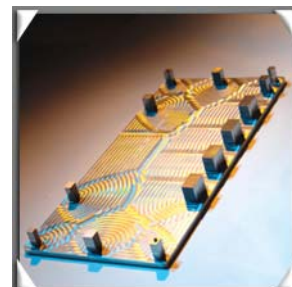
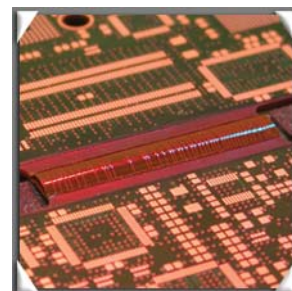
- Gerber: RS-274-D, RS-274-X
- EDIF 400
- NC Drill/Route: Excellon, Sieb and Meyer
- .DXF
- .DWG
- ODB++
- .PLT
- .HPGL
- BARCO (.DPF)

The following are the general data files required for fixture development. Products are processed differently. Supplying us with all of this data will ensure that we have what is needed for your application.

- Top & Bottom Side Silkscreen
- Top & Bottom Side Paste
- Top & Bottom Side Mask
- Fabrication Drawing
- Drill Fab Layer

Other Requirements:

- Height of components on the solder side of the PCB
- Height of components requiring hold downs
- Is any hardware present? If so, size and location
- Identify any components which overhang the board and whether they seat flush to the top of the PCB or reseed to a certain depth



pentagon PCB Assembly Process Tooling
ELECTRONIC MANUFACTURING SOLUTIONS

10950 SW 5th St. Suite 275 - Beaverton, OR 97005 - (503) 924-2747 - www.pentagon-ems.com