

 **ARCADIA**
Archimede Smart Storage System

SMART STORAGE SYSTEM

Archimede

INCOMING SYSTEM

Galileo

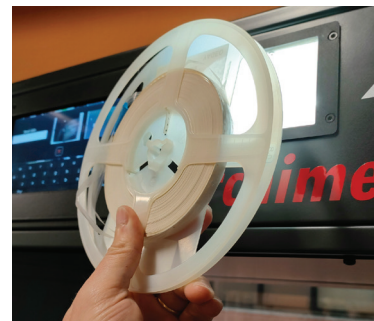
SMART CART

Archimede



Kubler US Corp.
High Tech Solutions

80 Pine Street, Floor 24
New York, NY 10005
Phone +1 (212) 232-3064
boris@kubler-us.com



ARCHIMEDE SYSTEM

A game-changer in vertical component storage

Archimede is a comprehensive solution, not just a storage system, offering efficiency, flexibility, and Industry 4.0 readiness.

Optimized Space Efficiency:

Stores up to 720 reels in just 0.45 m², maximizing facility space utilization.

Rapid Reel Storage and Retrieval:

Swift storage time of 5 seconds and retrieval time of less than 3 seconds for minimal down-time.

Versatile Configurations and Applications:

Modular and flexible design allows for versatile configurations, extending automation benefits to picking, kitting, and refilling.

Industry 4.0 Ready:

Full traceability, easy integration with MRP software, and custom P&P software solution align with Industry 4.0 standards.

BoM Management and FiFo Functions:

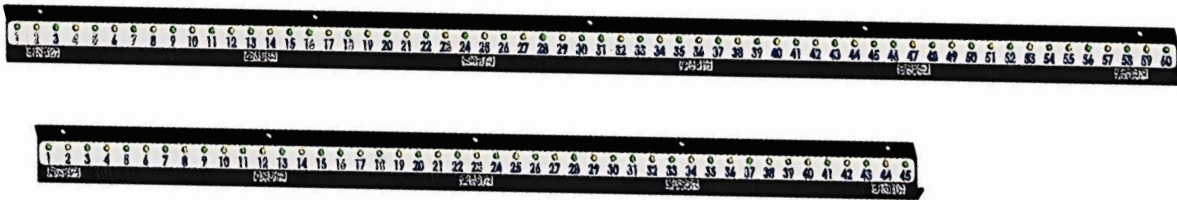
Efficient production control with Bill of Materials (BoM) management and First-In-First-Out (FiFo) functions.

Smart Sensorized Shelves:

Sensorized positions on shelves prevent picking and storage errors, ensuring accuracy in component handling.

Real-time Monitoring and Control:

Software properties enable real-time monitoring and control for synchronized production operations.



ARCHIMEDE SMART BARS

Transform Your Warehouse into a Smart Storage System

Unlock the full potential of your warehouse with Archimede Smart Bars! Say goodbye to the days of endless searching and welcome a new era of efficiency and organization. By converting your existing shelves into a sophisticated pick-

to-light system, Archimede Smart Bars not only streamline your storage but also ensure flawless tracking of every item within your premises. It's time to transform your traditional warehouse into a smart, interconnected hub.

Optimized Storage:

Easily adapt to any warehouse layout with a modular structure, making every space smart.

Seamless Integration:

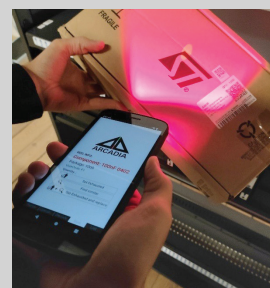
Natively connected to Archimede management software for effortless setup and inventory management.

Efficient Item Storage and Retrieval:

Utilize the PDA for guided storing and picking, highlighting suggested positions and confirming actions.

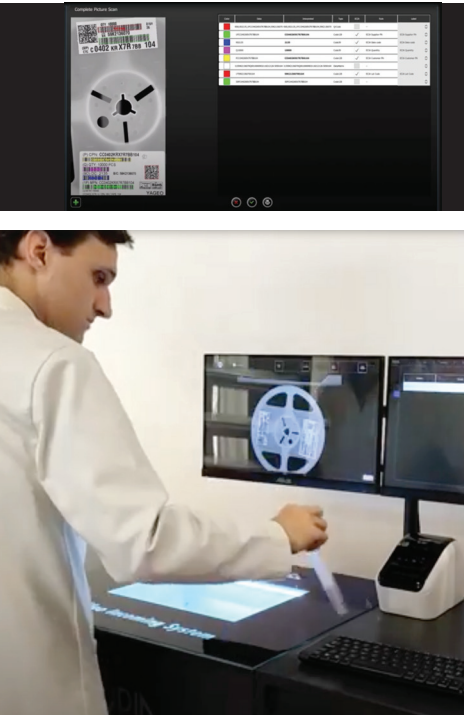
Industry 4.0 Ready

Full traceability and easy linkage with factory MRP software for a truly smart warehouse experience.



Customizable:

Bars dimension tailored to your specific needs, offering a flexible solution to storage challenges.



GALILEO INCOMING SYSTEM

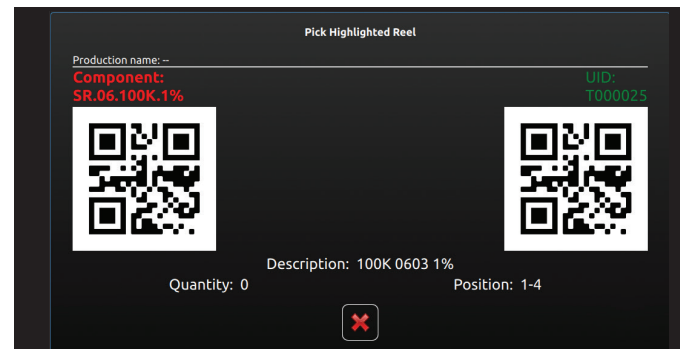
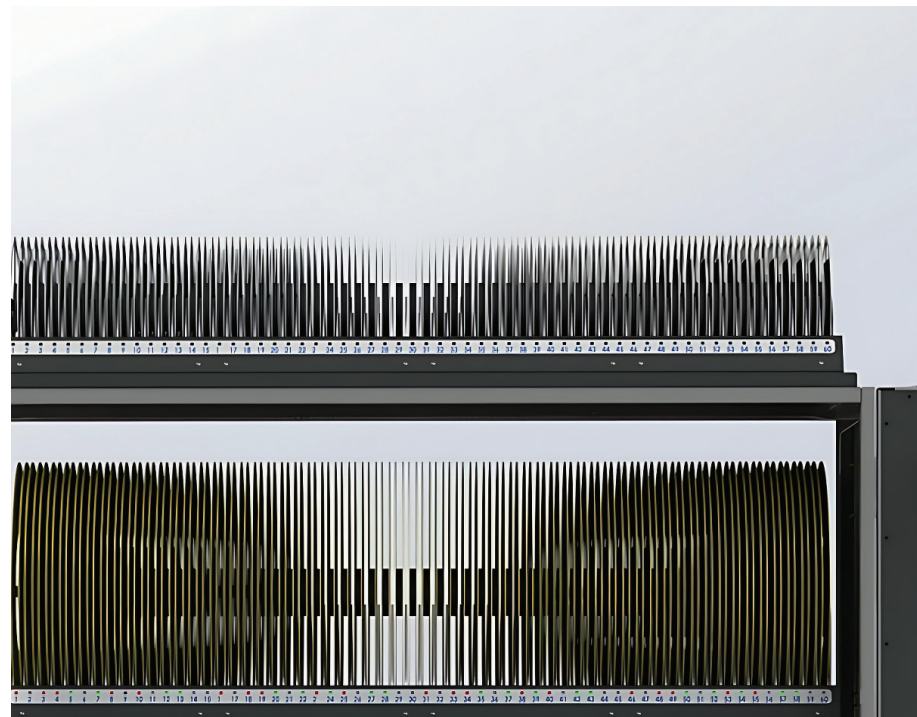
Streamlined Component Management

Galileo's Incoming System revolutionizes component registration, ensuring swift and error-free data collection. Automate the identification process through automatic barcode detection, recognizing both 1D and 2D barcodes (QR-code and DataMatrix). The system catalogs components based on manufacturers' labeling methods, creating unique codes and printing labels for seamless integration with the Archimede system. This not only accelerates

data collection exponentially but also eradicates manual labeling errors. Galileo is natively connected and smart, learning to recognize data, associating barcodes with related information, and facilitating instant, error-free storage operations when connected to the Archimede system. Embrace Industry 4.0 with Galileo—optimize processes, minimize management time, and eliminate sorting errors. Make your company truly connected and efficient.

FEATURES

- ▶ Automatic barcode detection for 1D and 2D barcodes (QR-code and DataMatrix)
- ▶ Cataloging components per manufacturers' labeling methods
- ▶ Creation of unique codes and direct label printing for integration with Archimede system
- ▶ Elimination of manual labeling errors
- ▶ Natively connected and smart, learning to recognize data and facilitating instant storage operations
- ▶ Industry 4.0 readiness, enabling real-time monitoring and access from any location
- ▶ Optimization of processes, minimizing management time, and eliminating sorting errors.



ARCHIMEDE SMART CART

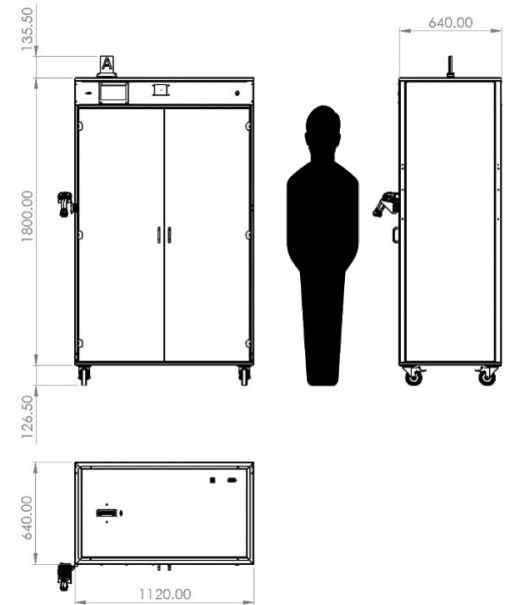
Move your components quickly and safely

Elevate your component handling with the Archimede Smart Cart, the ultimate sensorized solution for efficient and secure transportation of components. Seamlessly integrated with your

company's Archimede system, this intelligent cart transforms the movement of components, ensuring immediate transfer, enhanced safety, and optimized setup times.

FEATURES

- ▶ **Sensorized Navigation:** Utilize advanced sensors and RGB LEDs for straightforward picking and placement of components.
- ▶ **Touchscreen Interface:** Easy-to-use touch-screen display guides sequential component withdrawal, displaying vital data for each item.
- ▶ **Long-lasting Battery:** Ensure uninterrupted operation and mobility with a durable, high-capacity battery.
- ▶ **Setup Time Reduction:** Minimize loader setup errors and slash verification times, significantly improving production efficiency.
- ▶ **Safe and Orderly Transport:** Safely transport components to the setup station, aligning with the setup list for swift job transitions.



ARCHIMEDE STENCIL STORAGE SOLUTION

Revolutionizing Stencil Management

Upgrade your screen printing with the Archimede Stencil Storage Solution, designed to bring order, efficiency, and protection to your stencils. Whether you're working with foils, VectorGuards, or framed stencils, Archimede's

innovative shelving system ensures that every stencil is just a glance away. Embrace a clutter-free, dust-protected environment where finding the right stencil becomes a swift and error-free task.

Designed for Diversity:

Accommodates all stencil types, including frameless, DEK VectorGuard, and framed stencils, within a compact space.

Sensorized Positions:

Each slot is equipped with a dedicated RGB LED, allowing multiple operators to easily locate their stencils..

High Capacity Storage:

Store up to 240 frameless stencils or 120 VectorGuard stencils in just 0.60 square meters.

Dust Protection:

Optional stylish glass doors keep stencils free from contamination.

Interconnected System:

Fully integrated into the Archimede environment for streamlined BOM management and remote setup changes.

Error-Free Retrieval:

Quickly and accurately find necessary stencils for production, enhancing overall efficiency and reducing setup times.